



# Environmental Advocacy in Central Queensland

Advocating to change “what is” to “what should be”



## Our achievements

July 2023 – June 2024

# We decided on our four major campaigns...

- ★ Koalas not Coal
- ★ No new coal and gas
- ★ Keep Blue out of CQ
- ★ Fixing legislation and policy



**KOALAS  
NOT  
COAL!**

And we developed posters, flyers and placards for each of these campaigns

## ★ Koalas not Coal ★

Did you know that thousands of hectares of koala habitat is cleared for coal mines?

Coal mines also release huge amounts of greenhouse gases during operation, and then even more when the coal is transported and burnt.



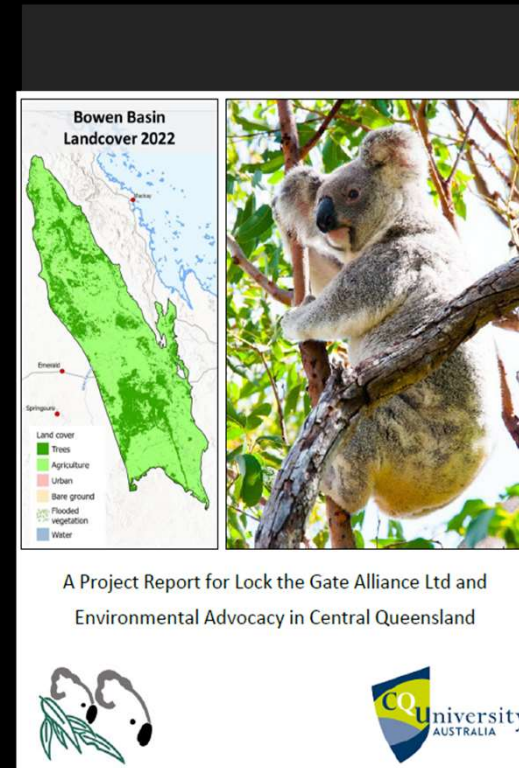
**Habitat loss and climate change are the two biggest threats to koalas.  
Coal mines significantly contribute to both!**

# ★ Koalas not Coal ★

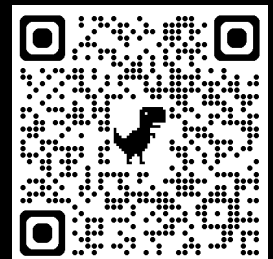
We needed good, scientific information to help fight to protect our koalas from coal mines.

Mapping Koala Habitat Disturbance in the Bowen Basin Queensland  
(Central Queensland University, June 2024)

Koalas or coal mines: how the federal government can help protect Australia's most iconic species  
(Koalas not Coal, August 2024)



Find out more using the QR code or at <https://envacq.org/research-projects/>





# ★ Koalas not Coal ★

Spreading the message and getting the community involved



Stalls at the Fig Tree Markets,  
Resilient Rural Living Expo



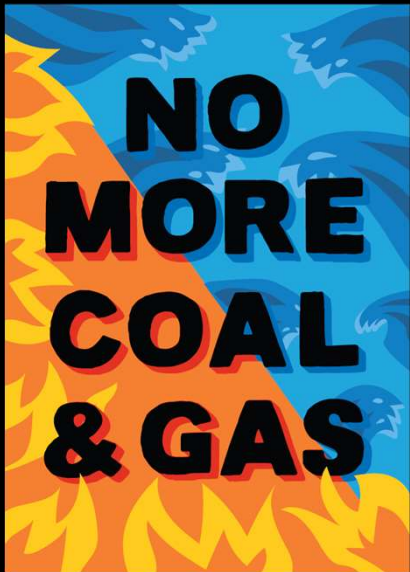
Koalas not Coal events



# ★ No New Coal and Gas ★

Most of this work is making submissions on new and expanding coal and gas.

Writing letters to government, organising petitions and getting our concerns raised in media are other important actions



## WHITEHAVEN COAL'S BLACKWATER SOUTH MINE

### Ghungalu Country near Blackwater in Central QLD

Koala impacts (ha): 6,884.6

Lifetime Coal Combustion emissions (Mt CO<sub>2</sub>-e): 1,574

- Whitehaven plans to mine up to 10 million tonnes of coal a year for 90 years, until the year 2112
- Species likely to be impacted: Greater glider, northern quoll, star finch, koala, ornamental snake, Yakka skink, southern snapping turtle, Fitzroy River turtle

Koala habitat on the site of Whitehaven Coal's proposed Blackwater South Coal mine, 6,884 hectares of Koala habitat is proposed to be cleared for the project, the biggest planned impacts to koala habitat of all proposed coal mines in Australia.



# No New Coal and Gas

## 16 submissions in the last year

All available on our webpage  
at [www.envacq.org](http://www.envacq.org)



- Nature Positive (Environment Protection Australia) Bill 2024 and related bills – Senate Standing committee
- Coppabella Mine Humbug Gully Project – EPBC referral
- Lake Vermont Meadowbrook Extension – group letter to Ministers Plibersek and Bowen in response to the Queensland Government’s EIS assessment report
- Comet Ridge Mahalo North Coal Seam Gas Project – EA application
- Saraji Mine Grevillea Pit Continuation Project – EPBC referral
- Barada Barna Road Upgrade – Olive Downs Coal Mine – EPBC referral
- Kestrel West Coal Mine Extension – EPBC referral
- Baralaba South – Environmental Impact Statement submission
- Comment on the proposed new Nature Positive laws
- Blackwater North Coal Mine extension – EPBC referral
- Vulcan South Coal Mine – EPBC referral
- Rolleston Coal Spring Creek North Continuation Project – EA amendment
- Sonoma coal mine extension – amended environmental authority and mining lease
- Energy (Renewable Transformation and Jobs) Bill 2023 – Transport and Resources Committee
- Climate Change Amendment Bill – Senate Standing Committee
- Caval Ridge Horse Pit Extension – EPBC referral

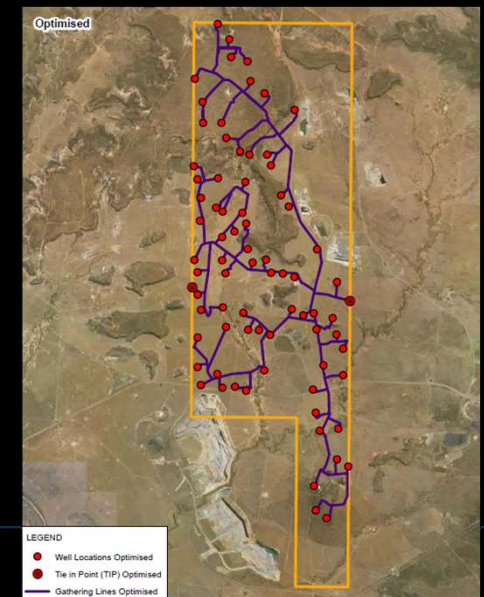
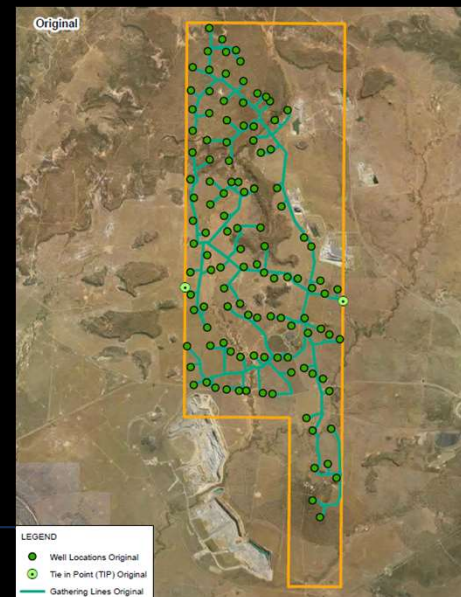


# ★ Keep Blue out of CQ ★

EnvA's legal challenge against the Queensland government's approval of this coal seam gas project continues!

So much has happened since we commenced the legal action a year ago.

We have been constrained in what we can communicate with members because it is with the courts.





# ★ Keep Blue out of CQ ★

## What we can say...

### Blue Energy have changed their project

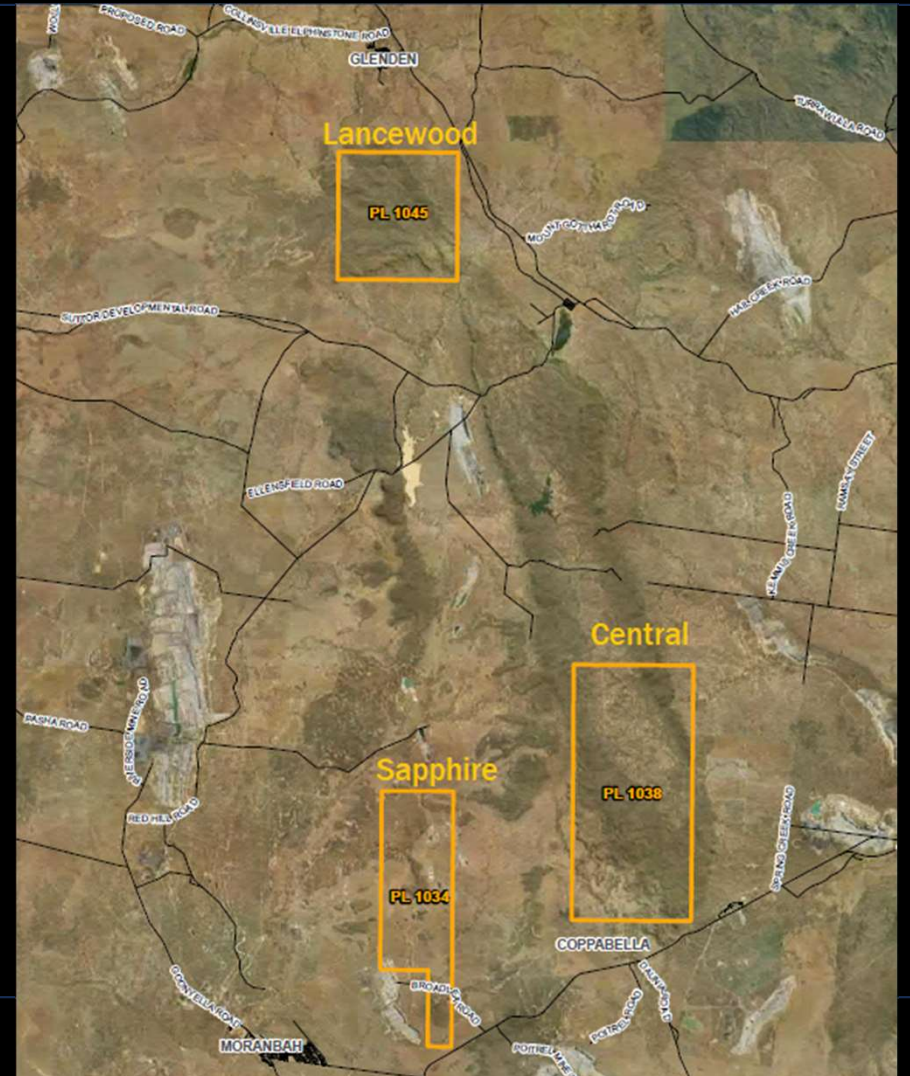
Blue Energy has withdrawn their application for Lancewood and Central and are only focused on the Sapphire lease ☺

### EnvA's ongoing case

We are still raising serious concerns about Blue Energy's proposal, including significant impacts to groundwater and biodiversity.

Blue Energy's initial application did not contain an assessment of greenhouse gas emissions, so we are asking for improved assessment of the project to ensure that the GHG emissions are properly calculated, and the contribution of Blue Energy's proposal to climate change is properly assessed.

EnvA is also raising concerns in relation to misinformation put forward by the petroleum and gas industry about the need for any new gas projects in the transition to net zero.



## ★ Keep Blue out of CQ ★

### What are the next steps?

The parties have now nominated their experts who will provide evidence in the proceedings.

There will be some out of court meetings for the experts to pin down the areas that the parties can agree to, and areas where the court will need to hear the evidence and decide the merit of the project approval.

The 'real' court hearing probably won't happen until at least March next year.



Find out more about our Blue Energy campaign at:  
<https://envacq.org/blue-energy/>



# ★ Fixing legislation and policy ★

Some of Qld's legislation and policy is flawed and is resulting in poor outcomes for the environment. 😬

Our campaign started with obvious issues with how DESI was using the guideline to determine whether an EIS was required.

Coal companies were splitting their projects into small pieces to avoid triggering the coal volume trigger.

As we continue to review projects for submissions, we keep finding even more issues that need fixing.

## Guideline

*Environmental Protection Act 1994*

### Criteria for environmental impact statements for resource projects under the Environmental Protection Act 1994

This guideline outlines criteria to be considered by the chief executive when deciding whether a resource project would be assessed by the environmental impact statement (EIS) process under chapter 3 of the Environmental Protection Act 1994 (EP Act).

## Information Sheet

*Environmental Protection Act 1994*

Non-Use Management Areas

## Guideline

Progressive rehabilitation and closure plans  
(PRC plans)

## Guideline

Greenhouse gas emissions

*Environmental Protection Act 1994*

This guideline provides information to support applications for activities that involve greenhouse gas emissions.

**The new  
greenhouse gas  
emission guideline  
seems to be good –  
time will tell!**

## ★ Fixing legislation and policy ★

What we have been doing in this campaign?

- Lots of letters to government!
- Including our concerns in relevant submissions
- Requests for assessment reports (CAC reports)
- Lots of meetings and conversations with DESI

### **The standard response**

“We always do a thorough assessment of every project regardless of whether and EIS is required or not”

**We do think we are making a difference!**

We haven't managed to change the guideline, but we have made them more attentive to using the whole guideline and not just the coal volume trigger.

Proponents are now being asked for further information and having to include GHG emission calculations and decarbonisation plans.

**THERE IS STILL MORE TO DO ON THIS CAMPAIGN!**



# Growing EnvA:

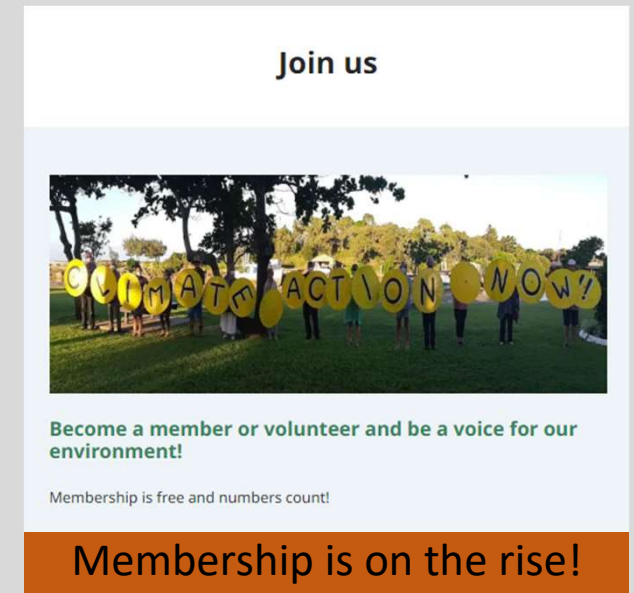
“The little noticed achievements”

Maintaining a webpage

Hosting a Facebook page

Growing our membership

Engaging media



# Thank you!

EnvA wouldn't be here without your support!.

Members

Donors



Volunteers

Supporters